

DRAWING NUMBER
26-4

DRAWING NUMBER

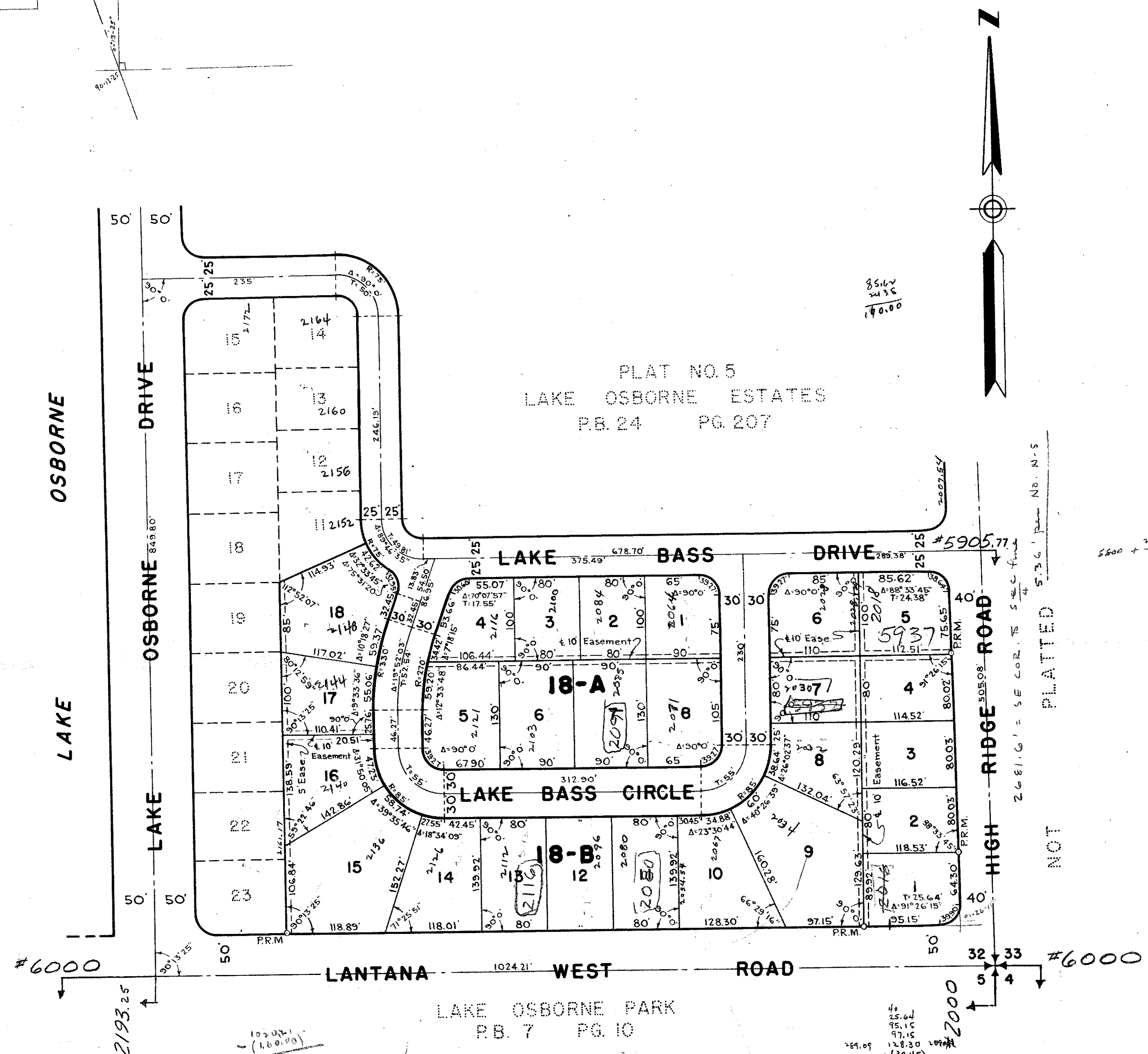
DRAWING NUMBER

DRAWING NUMBER

PLAT NO. 10 OF LAKE OSBORNE ESTATES

IN SECTION 32, TWP. 44 S., RGE. 43 E.
PALM BEACH COUNTY, FLORIDA
Being a Replat of Lots 1 to 10, inclusive, Block 18 and Tract "B",
Plat No. 5 of Lake Osborne Estates, recorded in Plat Book 24, Page 207,
Public Records of Palm Beach County, Florida

STATE OF FLORIDA
COUNTY OF PALM BEACH
This Plat was filed for record at 9:24
this 17th day of Dec.
1958 and duly recorded in Plat Book No.
26 on page 4
J. ALEX ARNETTE, Clerk Circuit Court
By: *Bertha M. Gibson*, D. C.



STATE OF FLORIDA
COUNTY OF PALM BEACH
KNOW ALL MEN BY THESE PRESENTS, that LAKE OSBORNE PROPERTIES, INC. and LAKE OSBORNE ESTATES DEVELOPMENT CO., Florida Corporations, the owners of the tract of land lying and being in Section 32, Township 44 South, Range 43 East, Palm Beach County, Florida, shown hereon as PLAT NO. 10 OF LAKE OSBORNE ESTATES, and more particularly described as follows, to wit:

Replat of Lots 1 to 10, inclusive, Block 18 and Tract "B", Plat No. 5 of Lake Osborne Estates, recorded in Plat Book 24, Page 207, Public Records of Palm Beach County, Florida.

have caused the same to be surveyed and platted as shown hereon, and do hereby dedicate to the perpetual use of the public, the Street shown hereon, and the use of the Easements for the construction and maintenance of Public Utilities.

IN WITNESS WHEREOF, the said Corporations have caused these presents to be signed by their Presidents and attested by their Secretaries and their corporate seals to be affixed hereto, by and with the authority of their Boards of Directors, this 13th day of August, A.D. 1958.

Attest:
By: *Shirley Biers* Secretary
By: *Irving Biers* President
LAKE OSBORNE PROPERTIES, INC.
By: *L. Frank Mc Gee* Secretary
By: *C. Vernon Kane* President
LAKE OSBORNE ESTATES DEVELOPMENT CO.

STATE OF FLORIDA
COUNTY OF PALM BEACH
I HEREBY CERTIFY that on this day personally appeared before me, an officer duly authorized to administer oaths and take acknowledgments, IRVING BIERS and SHIRLEY BIERS, President and Secretary, respectively, of LAKE OSBORNE PROPERTIES, INC. and C. VERNON KANE and L. FRANK MC GEE, President and Secretary, respectively, of LAKE OSBORNE ESTATES DEVELOPMENT CO., to me well known and known to me to be the individuals described in, and who executed the foregoing dedication, and they acknowledged before me that they executed the same as such officers of said Corporations, by and with the authority of their respective Board of Directors, for the purposes therein expressed, and that their acts and deeds were the acts and deeds of said Corporations.
WITNESS my hand and official seal at West Palm Beach, County of Palm Beach, and State of Florida, this 13th day of August, A.D. 1958.

John J. Flowers
Notary Public

My Commission expires: August 7, 1961

STATE OF FLORIDA
COUNTY OF PALM BEACH
I HEREBY CERTIFY that the plat shown hereon is a true and correct representation of a survey, made under my direction, of the above described property, and that said survey is accurate to the best of my knowledge and belief, and that permanent reference monuments (P.R.M.) have been placed as required by law.

George Z. Brockway
Registered Land Surveyor
Florida Certificate No. 831

Subscribed and sworn to before me this 12th day of November, A.D. 1958.

John J. Flowers
Notary Public

My Commission expires: August 7, 1961

NOTE
Building Setback Lines shall be as required by Palm Beach County Zoning Regulations.

There shall be no buildings or other structures placed on Utility Easements.

There shall be no buildings or any kind of construction, or trees or shrubs placed on Drainage Easements.

NOTE
All Block Corners are rounded with a 25 foot radius, unless otherwise shown.

Easements are for Public Utilities, unless otherwise noted.

Approved: DECEMBER 8th, A.D. 1958
Board of County Commissioners

By: *Lee Lytal*
Vice Chairman

By: *L.R. Hunt*
Asst. County Engineer

26
9
32/44/43
1000-265

BROCKWAY, WEBER & BROCKWAY
ENGINEERS
WEST PALM BEACH, FLORIDA
PLAT NO. 10 OF
LAKE OSBORNE ESTATES
(26-4)
FIELD: _____ OFFICE: J.J.F. SCALE: 1" = 100' Dwg. No. _____
DR. BY: M.G.B.

